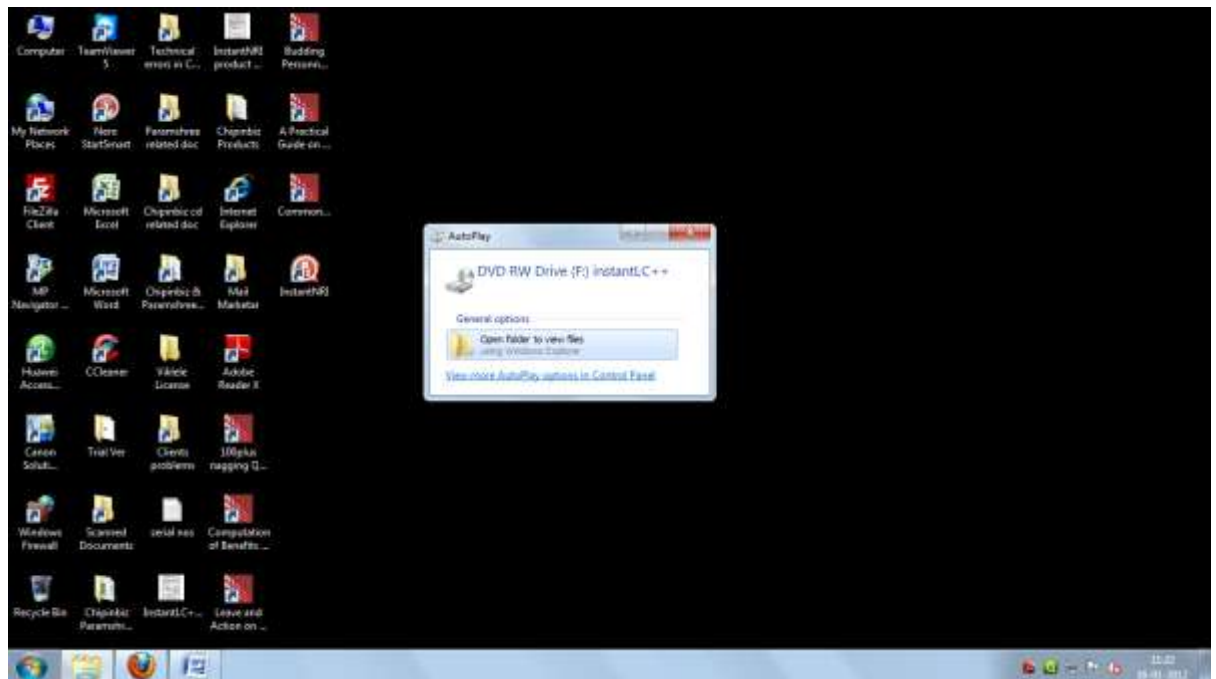


- a. Insert the CD in the CD drive of the machine in which the software is to be installed. For any reason, if the installation does not start automatically, open the window explorer and go to the CD drive.
If you have downloaded the software this process is not required.
- b. Double click on the “setup.msi” file in the CD Drive to start the installation.
If you have downloaded the software just click on the setup.msi file downloaded.
After this the installation will go on.



Step 2

- a. During the installation, the license agreement will be displayed in the window on your desktop. For accepting the same click in the check box.
- b. Then click on "Install" Button. The installation will go on and finally, when it is over click on "Finish" Button.
- c. At this stage the software is installed on your machine. An icon as shown below will be automatically created in your desk top. (here is an example of one product. Depending upon the product the name would appear accordingly).



Now remove the CD (if you are installing through the CD) and preserve it. Hereafter, you don't require the CD.

- d. At this point you would be able to have the look and feel of this software including the identified contents.
- e. To totally Activate/Register this software to have access to all the contents, please click on the menu option 'Register' on the top of the screen. You will have to click on the sub-menu option 'Register this software' to Activate/Register this software. The

sub-menu option 'How to Register' would provide you a pdf help file explaining the procedure.

